

Mortex

Preblended Mortar

For mortar just add water



Mortex Preblended Mortar

Mortex is a factory manufactured, quality assured premixed M4 rated mortar solution. Its consistency can save labour time, increase efficiency, remove the need for on site blending, and it is compliant with AS3700:2018. Mortex takes the guess work out of mortar blending and reduces the potential for under strength, non compliant mortar use.

This can ultimately reduce potential liabilities, saving money and time on rectifications. With the adoption of ISO9001:2008 principles, the mortar constituents are accurately measured and blended in a controlled environment to ensure consistent, homogeneous mortar is produced on-site.

The Benefits

- 1. Consistency**

Mortex is factory manufactured which means it is quality controlled and tested to ensure the mix provided is consistent.

It also ensures enhanced structural adequacy as the strength variation of batches is reduced when compared to site blending mortar.
- 2. Strong**

Mortex is M4 rated which means it is the strongest mortar blend specified in the Australian standards.
- 3. Ready to use**

Mortex is pre-bagged ready for use and only requires the addition of clean water. Selected sands, lime, cement and admixtures have been blended together to produce Mortex.
- 4. Compliant and quality assured**

Standard mortars blended on site rely on trades to mix the correct proportions of ingredients to achieve a compliant mortar mix.

Mortex is pre blended to ensure that, when mixed according to the noted specifications, it will comply with Australian standards.
- 5. Save time and labour**

Standard mortar requires a labourer mixing defined proportions of cement, sand, lime and admixtures on site.

Because these components are premixed, Mortex simply requires water to be added to the mix which can save time and labour costs.
- 6. Durability**

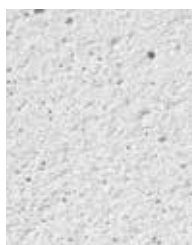
Mortex provides a weather resistant and durable mortar and is suitable for most brick and block applications.
- 7. Long lasting**

Mortex is highly workable and cohesive, with a long board life.

Colours

White mortar is currently the most popular colour. This is made by mixing light coloured cement and white sand and results in a traditional brick and mortar look. Mortar can be coloured by adding powdered or liquid pigments to the mortar as it is being mixed by the blocklayer. It can also be tinted to match the brick colour, giving a very even wall colour.

Please confirm with your blocklayer what their mortar colouring offering is before making your final decision.



MORTEX White



MORTEX Grey



MORTEX Charcoal

Please refer to the MORTEX Charcoal Technical Data Sheet for installation and cleaning guidelines before use.

Steps for use

1.

Mortex

Place 20kg of Mortex into a cement mixer.

2.

Add water

Add pre measured water to the mix using 3.4 litres for Mortex White and 3.5 - 3.7 litres for Mortex (Standard Grey). Add in increments while mixing, and mix thoroughly to obtain a consistent even mix.

Do not use excessive amount of water outside of the recommended levels as this will affect workability and weaken the mortar.

3.

Ready for use

Use mix within 1 hour of mixing and discard mix that has been standing for an extended period of time. Do not add additional water to Mortex which has lost workability – discard mix.

Apply adequate amount to each laying bed for even spacing of mortar joints. Allow the Mortex to set before raking or finishing the joints. Clean equipment with water after use.

Visit. australmasonry.com.au

Call. 1300 Masonry

A BRAND OF

BRICKWORKS

